

IXP220 SOFTWARE

w w w . i m p r o . n e t



impro technologies®
ACCESS CONTROL

PRODUCT INFORMATION



IXP220

IXP220

VERSION 1.80

IMPRO TOUCH Sagem Integration

The Impro Touch Module facilitates the integration and configuration of various third-party Biometric Readers for use with the IXP220 Software. These systems currently include various Sagem Fingerprint Readers integrated with the IXP220 Software Suite via the Biometric Server Software. The Server Software also allows for the direct enrollment (registration) of Tagholders and related biometric data at those Biometric Readers from within the IXP220 Software. The Impro Touch Module uses a centralized Database and permits the user to add, edit or delete bio-templates.

The introduction of biometric access control greatly increases the access control capabilities of IXP220 Systems where you need extra security measures. Using the Impro Touch Module with Sagem hardware puts your site at a greatly enhanced level of security and access control.

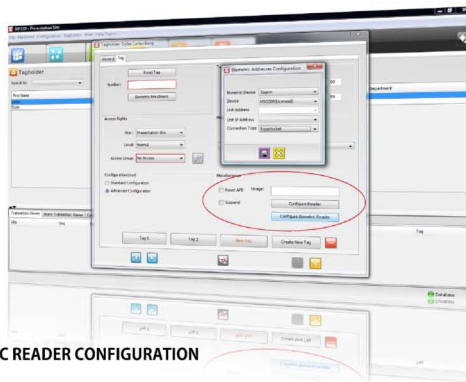
Now, with the upgraded Version (V1.80) of the IXP220 Software Suite, certain previous 'bug' issues have been repaired to make sure the Impro Touch Module, and more specifically, Sagem Integration runs smoother and operates even more efficiently.

KEY FEATURES:

- Biometric Access Control
- Increased security
- Effortless installation
- Seamless integration and scalability



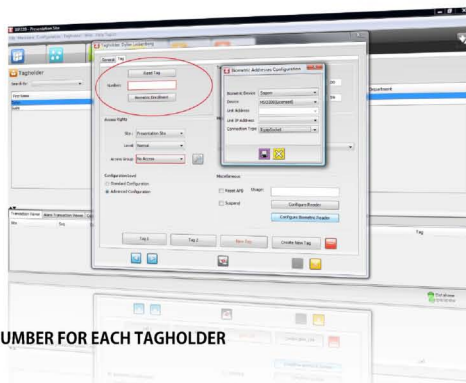
BIOMETRIC ADDRESS CONFIGURATION



BIOMETRIC READER CONFIGURATION



SELECT CORRECT DEVICE



UNIQUE NUMBER FOR EACH TAGHOLDER