



impro technologies®
ACCESS CONTROL

IXP400i SYSTEM

ImproNet **Software** | Version **7.66 (SP6)**

Minimum Software Requirements:
ImproNet Version 7.66 (SP6)

ImproNet **Software** Version **7.66 (Service Pack 6)**

KEY FEATURES:

- IP Door Controllers
 - Discovery Application now detects IP enabled door controllers
 - System and IP enabled door controllers can now be grouped for easy identification
 - New IP door controller based report for identifying conflicting controller communications
 - New report for terminal communications diagnostics.
- Support for the Multi Discipline Time & Attendance (MDTA) reader.
- Added support for new Safran Morpho (Sagem) J-Series.
- New Sagem firmware (version 2.12.3) supported.
- Virtual I/O now supports a new TCP/IP server action type that allows broadcasting transaction details to third-party clients.

The ImproNet Software Suite is the powerful software backbone to Impro's top-of-the-range IXP400i Access Control system. With Service Pack 6 now released, ImproNet hosts several new features that are designed to streamline your existing IXP400i site, as well as improve flexibility with additional communication options.



IXP400i
VERSION 7.66

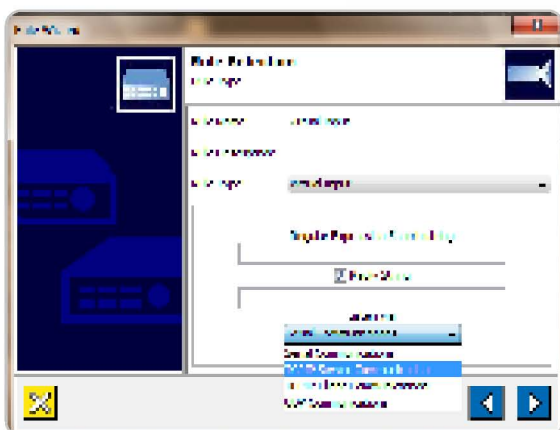
ImproNet Software |



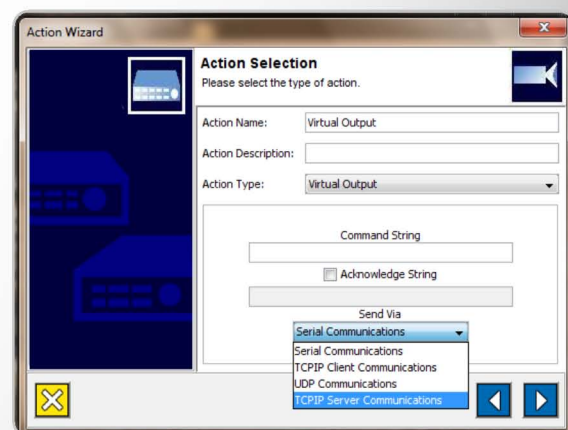
ImproNet has been designed to provide the power and control needed to operate and manage large, integrated sites with a variety of user-friendly ImproNet Software Modules such as:

- Impro Touch for Safran Morpho readers.
- Impro Vision for CCTV camera integration.
- Integrated Digital Video Recording (DVR) System
- Alarm integration
- SMS integration
- Virtual I/O used to communicate with any third-party device that can send or receive ASCII command strings
- Multi-layer graphic floor plan representation including alarm and transaction monitoring
- Integrated badging module for card design and printing

The IXP400i is a multi-door enterprise access control solution designed to meet today's most demanding security requirements including seamless integration with any existing or future third party application you might need on your site. This System uses the powerful ImproX Controllers and the ImproNet Access Control Software Suite to control up to 3 000 doors and up to 300 000 Tagholders per site with multiple sites linked across a worldwide network. The IXP400i features the latest security innovations providing visual verification, easier operation and enhanced cost-effectiveness with a single log-on, making IXP400i the complete security environment organizations are looking for.



Virtual Input



Virtual Output

Comms Diagnostics Report 12:54:10

Back to Web Reports Home Page

Submit Export CSV

Date: 2010/09/28

Controller Filter: GE000C2E : 6E000C2E

Door Filter:

Logical Address Filter:

Include All Sites:

Report Date: 2010-09-28, Tuesday

TIME	EVENT	DOOR	UNIT TYPE	LOGIC ADDRESS	ROUND TRIP TIME (MS)	FAILURES
10:53:45	Comms Diagnostics	MDTAK:22825500	Multi Discipline TA Keypad Terminal	0101011D	18	0
11:18:44	Comms Diagnostics	MDTAK:22825500	Multi Discipline TA Keypad Terminal	0101011D	25	0
11:24:43	Comms Diagnostics	MDTAK:22825500	Multi Discipline TA Keypad Terminal	0101011D	17	0

3 transaction/s..

Report generated on 2010-09-28, Tuesday 12:53:57.

Back to Web Reports Home Page

Comm Diagnostics

Discovery Utility

File View Action Configuration Help

Devices detected on this subnet

MAC Address	Device Name	IP Address	Static	Product	Version	LA
00-1A-6E-00-0C-2E	ECII_Yusuf_EC	192.1.2.27	✓	ecii	1.20	00
00-1A-6E-00-4D-61	ImproXITT_Yusuf	192.1.2.107	✓	ImproXITT	03.00	00
00-1A-6E-00-45-CD	ImproXITT_Yusuf	192.1.2.105	✓	ImproXITT	03.00	00
00-1A-6E-00-48-9D	ImproXITRT_Yusuf	192.1.2.100	✓	ImproXITRT	03.00	00
00-1A-6E-00-13-3F	ECII_Trevor_02_ECII	192.1.2.194	✓	ecii	1.20	00
00-1A-6E-00-10-93	ECII_Trevor_01_ECII	192.1.2.29	✓	ecii	1.20	00
00-1A-6E-00-00-D6	ECII_Simon	192.1.2.25	✓	ecii	1.20	00
00-1A-6E-00-08-A3	ECII_Sheila	192.1.2.166	✓	ecii	1.20	00
00-1A-6E-00-08-99	ECII_Shannon_3	192.1.2.160	✓	ecii	1.20	00
00-1A-6E-00-10-F8	Nicky_1_ECII	192.1.2.39	✓	ecii	1.20	00
00-1A-6E-00-07-1D	ECII_Design_2_Leaeroy	192.1.2.199	✓	ecii	1.20	00
00-1A-6E-00-07-28	ECII_Design_1_Leaeroy	192.1.2.198	✓	ecii	1.20	00
00-1A-6E-00-10-FC	J_do_not_touch	192.1.2.51	✓	ecii	1.20	00
00-1A-6E-00-07-0A	ECII_Hamish	192.1.2.136	✓	ecii	1.19	00
00-1A-6E-00-13-9F	ECII_Gustave2	192.1.2.26	✓	ecii	1.20	00
00-1A-6E-00-06-7E	ECII_Gustave1	192.1.2.13	✓	ecii	1.20	00
00-1A-6E-00-0F-13	ECII_Impro_Marketing	192.1.2.201	✓	ecii	1.19	00
00-1A-6E-00-10-9D	ECII_DYLANC_2	192.1.2.108	✓	ecii	1.20	00
00-1A-6E-00-11-03	ECII_DYLANC_1	192.1.2.113	✓	ecii	1.20	00
00-1A-6E-00-07-02	ECII_BSHO_TEST_16	192.1.2.21	✓	ecii	1.20	00
00-1A-6E-00-03-0A	ECII_IdentiTag	192.1.2.203	✓	ecii	1.19	00
00-60-6A-1C-85-08	ECII_Impro_Factory	192.1.2.202	✓	ecii	1.19	00
00-1A-6E-00-0F-1C	ECII_Impro_Design	192.1.2.200	✓	ecii	1.19	00
00-1A-6E-00-07-D3	ECII_Frazer_Left_1	192.1.2.165	✓	ecii	1.18	00
00-1A-6E-00-10-C0	ECII_Shellagh_UCT	192.1.2.164	✓	ecii_uct	1.18	00
00-1A-6E-00-53-42	ECII_Controller	192.1.1.174	✗	ecii	1.16	00
00-1A-6E-00-08-4A	ECII_Frazer_right	192.1.2.94	✓	ecii	1.18	00
00-1A-6E-00-10-70	ECII_J_4	192.1.2.23	✓	ecii	1.16	00
00-1A-6E-00-05-C7	ECII_Shannon_4	192.1.2.144	✓	ecii	1.20	00
00-1A-6E-00-01-38	ECII_Shannon_1	192.1.2.141	✓	ecii	1.20	00
00-1A-6E-00-08-4E	ECII_J_2	192.1.2.7	✓	ecii	1.16	00
00-1A-6E-00-10-9F	ECII_PINEMEAD_GATE	192.1.2.237	✓	ecii	1.16	00
00-1A-6E-00-05-D6	ECII_Rashid_DontCl...	192.1.1.54	✗	ecii	1.16	00
00-1A-6E-00-12-9B	ServerRoomNasNoTo...	192.1.3.172	✓	ids500	1.10	00

Discovery App Grouping





Discovery Utility

File View Action Configuration Help

Devices detected on this subnet

MAC Address	Device Name	IP Address	Static	Product	Version	LA
00-60-6A-1C-85-0B	ECII_Impro_Factory	192.1.2.202	✓	ecii	1.19	00
00-1A-6E-00-0F-1C	ECII_Impro_Design	192.1.2.200	✓	ecii	1.19	00
00-1A-6E-00-07-D3	ECII_Frazer_Left_1	192.1.2.165	✓	ecii	1.18	00
00-1A-6E-00-10-C0	ECII_Shellagh_UCT	192.1.2.164	✓	ecii_uct	1.18	00
00-1A-6E-00-53-42	ECII_Controller	192.1.1.174	✗	ecii	1.16	00
00-1A-6E-00-08-4A	ECII_Frazer_right	192.1.2.94	✓	ecii	1.18	00
00-1A-6E-00-10-70	ECII_J_4	192.1.2.23	✓	ecii	1.16	00
00-1A-6E-00-05-C7	ECII_Shannon_4	192.1.2.144	✓	ecii	1.20	00
00-1A-6E-00-01-38	ECII_Shannon_1	192.1.2.141	✓	ecii	1.20	00
00-1A-6E-00-08-4E	ECII_J_2	192.1.2.7	✓	ecii	1.16	00
00-1A-6E-00-10-9F	ECII_PINEMEAD_GATE	192.1.2.237	✓	ecii	1.16	00
00-1A-6E-00-05-D6	ECII_Rashid_DontCl...	192.1.1.54	✗	ecii	1.16	00
00-1A-6E-00-12-98	ServerRoomNasNoTo...	192.1.3.172	✓	ids500	1.10	00
00-1A-6E-00-01-33	ServerRoomNoTouch	192.1.3.171	✓	ids500	1.10	00
00-1A-6E-00-00-23	IDSS00_Shannon_2	192.1.0.234	✓	ecii	1.19	00
00-1A-6E-00-08-52	Nicky_2_ECII	192.1.2.43	✓	ecii	1.16	00
00-1A-6E-00-46-5F	ImproXTRT	192.1.1.154	✗	ImproXTRT	03.00	00
00-1A-6E-00-46-2F	ImproXIT	192.1.1.131	✗	ImproXIT	03.00	00
00-1A-6E-00-46-44	ITT_Awesome3	192.1.2.104	✓	ixp20	03.00	00
00-1A-6E-00-49-01	ITT_Awesome1	192.1.2.84	✓	ixp20	03.00	00
00-1A-6E-00-45-C7	ITT_Shanelle3	192.1.2.33	✓	ImproXIT	03.00	00
00-1A-6E-00-48-58	ITRT_Shanelle1	192.1.2.32	✓	ImproXTRT	03.00	00
00-1A-6E-00-45-C5	ITT_Shanelle1	192.1.2.30	✓	ImproXIT	03.00	00
00-1A-6E-00-3D-87	ITRT_Jason2	192.1.2.59	✓	ImproXTRT	03.00	00
00-1A-6E-00-3D-7C	ITRT_Jason1	192.1.2.56	✓	ImproXTRT	03.00	00
00-1A-6E-00-48-60	Shannon8_ITRT	192.1.2.78	✓	ImproXTRT	03.00	00
00-1A-6E-00-45-C9	Shannon7_ITT	192.1.2.77	✓	ImproXIT	03.00	00
00-1A-6E-00-45-D1	Shannon6_ITT	192.1.2.76	✓	ImproXIT	03.00	00
00-1A-6E-00-45-D3	Shannon5_ITT	192.1.2.75	✓	ImproXIT	03.00	00
00-1A-6E-00-48-7C	Shannon4_ITRT	192.1.2.74	✓	ImproXTRT	03.00	00
00-1A-6E-00-45-DA	Shannon3_ITT	192.1.2.73	✓	ImproXIT	03.00	00
00-1A-6E-00-48-5C	Shannon2_ITRT	192.1.2.72	✓	ImproXTRT	03.00	00
00-1A-6E-00-48-8F	Shannon1_ITRT	192.1.2.71	✓	ImproXTRT	03.00	00
00-1A-6E-00-4D-67	Johan12	192.1.2.99	✓	ImproXTRT	03.00	00

12:49 PM
2010/09/28

Discovery App IP

Graphics Runtime

File View Tools Help

Hawaii

192.1.3.225 Reception 2010-09-28 14:52:51

192.1.3.225 Office 1 2010-09-28 14:49:38

192.1.3.225 Office 2 2010-09-28 14:49:39

Terminal	Name

02:49 PM
2010/09/28

Mirasys

ImproNet Software |

